

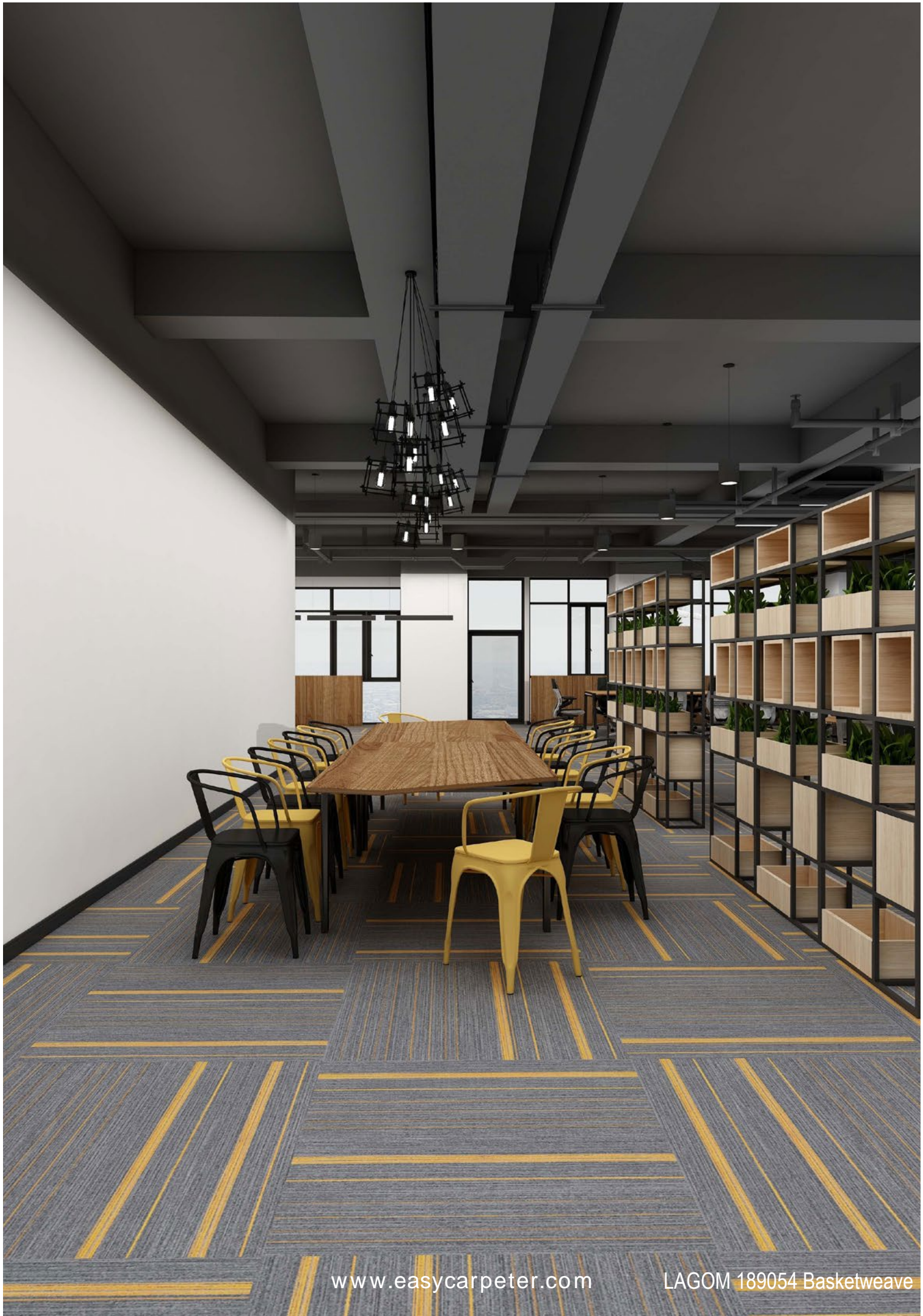


LAGOM 189















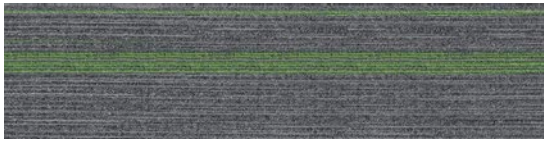




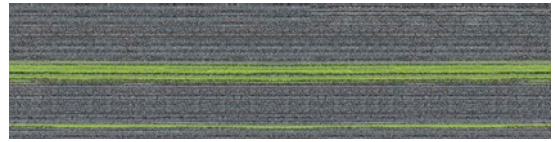




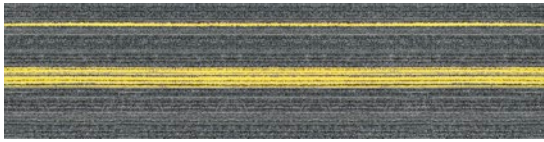
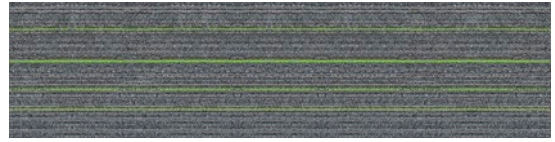
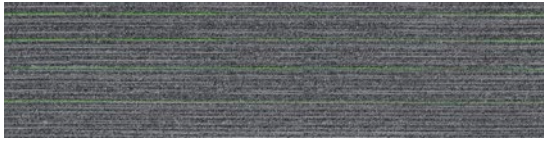




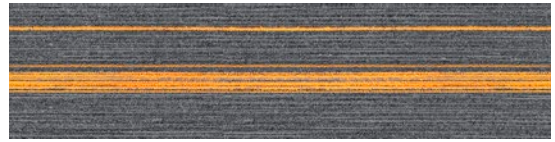
LAGOM 189051



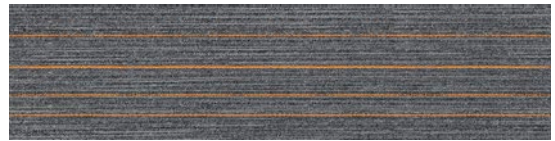
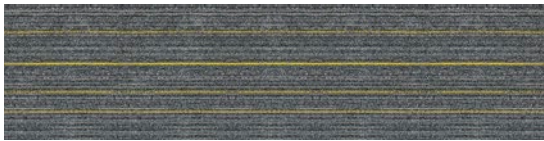
LAGOM 189052



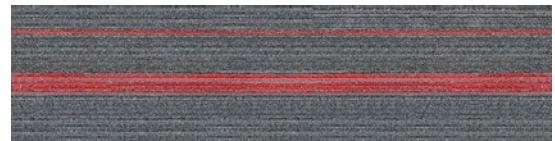
LAGOM 189053



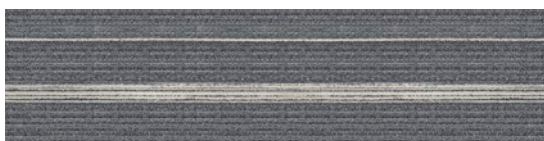
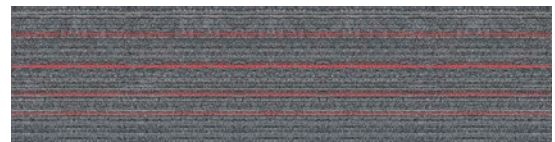
LAGOM 189054



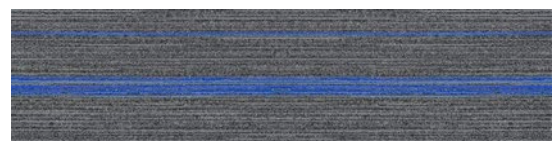
LAGOM 189055



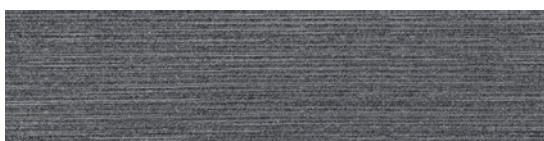
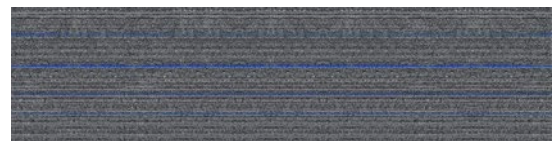
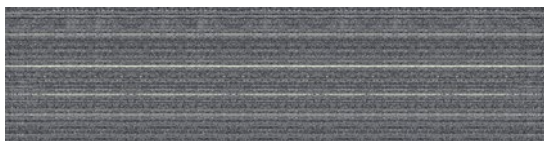
LAGOM 189056



LAGOM 189057



LAGOM 189058

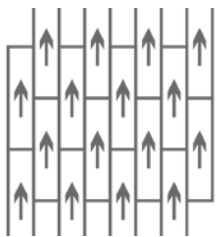


LAGOM 189059

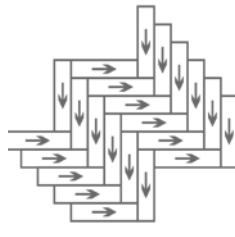
Specification 技术指标

Product Name 产品名称	LAGOM 189
Product Code 产品编码	LAGOM 189
Tufted construction 簇绒结构	Multi-level Loop 高低圈绒
Fiber 纱线	100% Nylon 尼龙
Dye method 染色工艺	Solution Dyed 原液染色
Gauge 针距	1/12
Tufted weight(g/m ²) 绒重(克/平方米)	560 ± 5%
Tile size(mm) 地毯尺寸(毫米)	250 x 1000
Pile height(mm) 平均绒高(毫米)	4.0 ± 0.5
Total height(mm) 总绒高(毫米)	6.5 ± 0.5
Standard Backing 标准底背	Glass fiber reinforced PVC

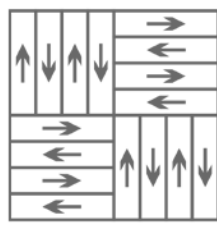
Recommended installation methods 建议铺装方式



Ashlar
上下错半



Herringbone
人字形



Basketweave
网篮形



Anti-fouling



Anti-static



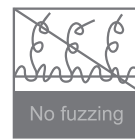
Environmental



Passed various tests



Fashion colors



100%B,C,F Yarn



Reduced Flammability



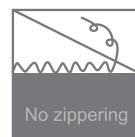
Isolation acoustic



Colorfast



Chair roulettes



No edge ravel



Wear resistance



Soil Resistance



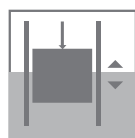
Wear Warranties



Dimensional Stability



Long life-span



Easy to transport



Non-moid